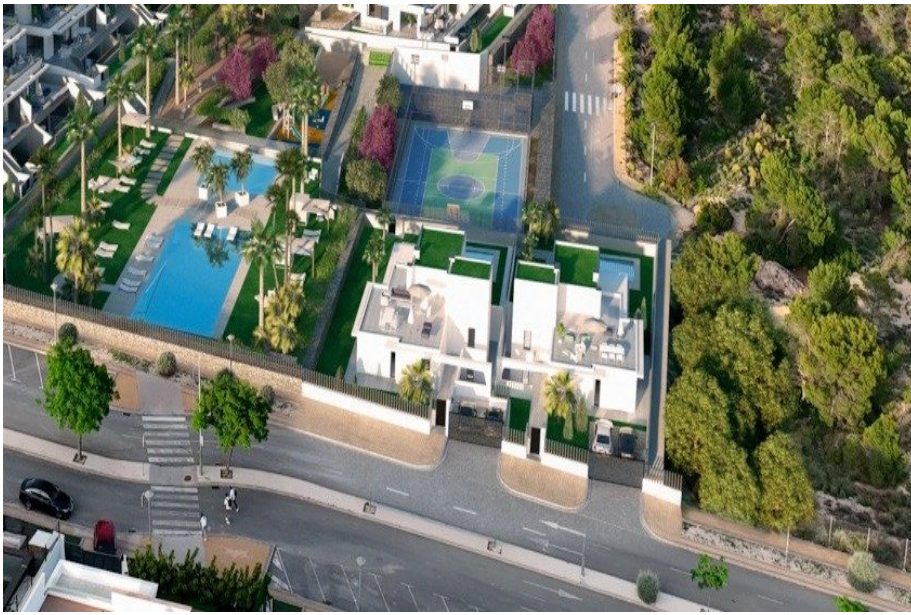




**GRANFIELD**  
estate

## Villa in Finestrat, Spain, Seascape resort area, 3 bedrooms, 229 m2 - #RSP-N8000



Property № RSP-N8000 from 29.10.2024

**€ 65000**



3



2



229 m<sup>2</sup>



598 m<sup>2</sup>



2024



3000 m.

### Description

Villa for sale in Spain. Finestrat, Seascape resort area.

New building, project of 2024, distance to the sea 3000 meters, only modern materials are used during construction, the object is key ready with a fine finish, the developer gives a construction guarantee from 1 to 10 years.

3 bedrooms, 2 bathrooms, built-up area 229 m2, plot 598 m2, terrace 162 m2, parking, in a closed urbanization, swimming pool, fitted wardrobes in the bedrooms, preinstallation for an air conditioner.

Refe...

### Options



Sea views



Pool



Terrace



Built-in wardrobe



Garage or parking



Urbanization



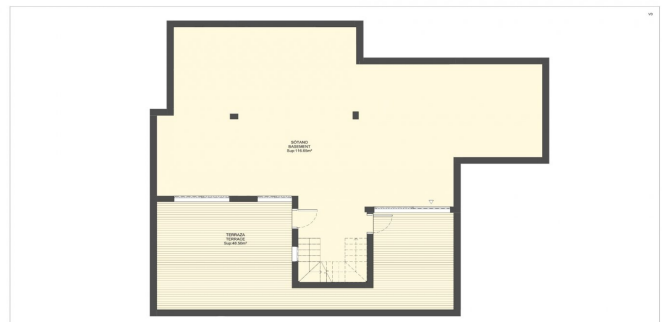


**GRANFIELD**  
estate

**Villa in Finestrat, Spain, Seascape resort area, 3 bedrooms, 229 m2 - #RSP-N8000**



**TOTAL SUP. ÚTIL VIVIENDA / LIVING AREA:** 269.48 m<sup>2</sup>.  
 Superficie planta solar / Property ground floor: 113.25 m<sup>2</sup>.  
 Sub. ÚTIL planta sótano / Property basement floor: 116.65 m<sup>2</sup>.  
 Sub. ÚTIL de terraza cubierta al 100% / Terrace covered: 39.58 m<sup>2</sup>.  
**TOTAL SUP. CONSTRUIDA / BUILT AREA:** 324.57 m<sup>2</sup>.  
**SUPERFICIES ADICIONALES / ADDITIONAL AREA:** 412.26 m<sup>2</sup>.  
 Sub. ÚTIL jardín / Recreación en el suelo / Terrace, parking area: 412.26 m<sup>2</sup>.  
**PARCELA/PILO:** 598.25 m<sup>2</sup>.



**TOTAL SUP. ÚTIL VIVIENDA / LIVING AREA:** 269.48 m<sup>2</sup>.  
 Superficie planta solar / Property ground floor: 113.25 m<sup>2</sup>.  
 Sub. ÚTIL planta sótano / Property basement floor: 116.65 m<sup>2</sup>.  
 Sub. ÚTIL de terraza cubierta al 100% / Terrace covered: 39.58 m<sup>2</sup>.  
**TOTAL SUP. CONSTRUIDA / BUILT AREA:** 324.57 m<sup>2</sup>.  
**SUPERFICIES ADICIONALES / ADDITIONAL AREA:** 412.26 m<sup>2</sup>.  
 Sub. ÚTIL jardín / Recreación en el suelo / Terrace, parking area: 412.26 m<sup>2</sup>.  
**PARCELA/PILO:** 598.25 m<sup>2</sup>.

